



# WINSTON / ROYAL GUARD CORPORATION

## *Type 65 Dry Gas Filters*



**The Type 65 Dry Gas Filter** efficiently removes rust, pipeline scale and dust from a natural gas stream. Applications include protection for valves, meters, regulators, and other equipment in refineries, chemical plants, pipeline stations, and others. Available in a horizontal or vertical design, the horizontal configuration has its benefits for better control of settled solids when changing out the filter cartridges.

**How it works:** The gas entering the dry gas filter vessel flows into the filter cartridges from outside-to-inside. With this flow direction, the gas stream encounters the greatest filter media area for the maximum dry contaminant holding capacity and ensuring clean gas exits the filter vessel. The depth type filter cartridge is the most economical and does an excellent job of holding solids. The pleated filter cartridge is a good choice for expected high solids loading and has a very low clean pressure drop.

Filter cartridges typically provided in the Type 65 Dry Gas Filters are:

- WCL536 (0.3) depth type with a rating of 0.3 micron at 99.9% efficiency (beta 1000), or,
- WP-L436b Pleated Series with a rating of 1 micron and available in either 99.9% efficiency (beta 1000) or 99.98% efficiency (beta 5000). With a pleated design, these filter cartridges offer a longer service life between cartridge change-outs resulting in a lower maintenance cost and reduction in lost gas revenues.

### **Options:**

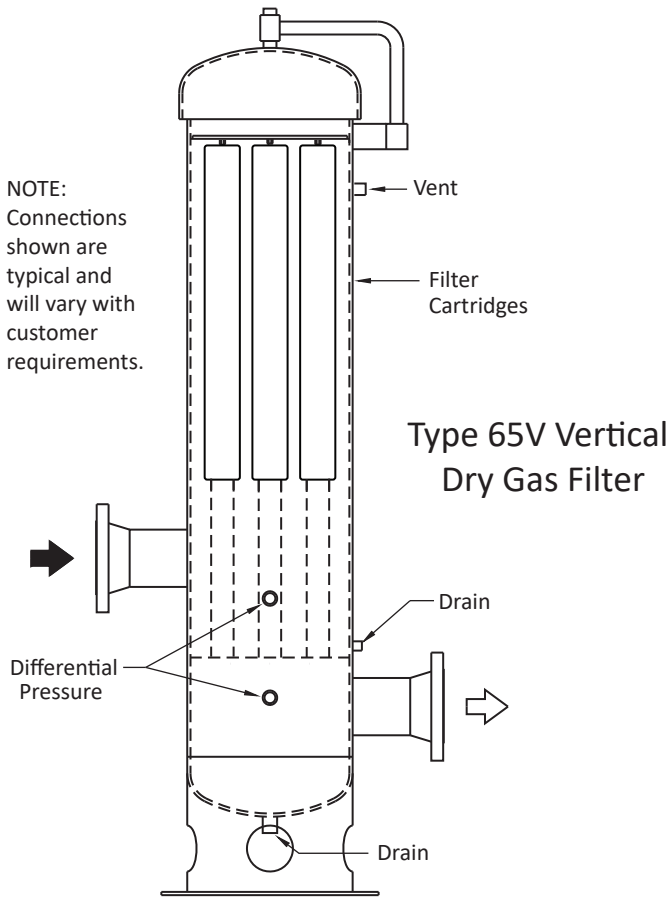
- Horizontal or vertical design.
- Various vessel support styles.
- Lifting eye(s).
- Quick-opening closure for ease of cartridge change-out.
- Other customer requirements.

**ASME Code Certified:** Winston/Royal Guard is an ASME Section VIII, Division 1 Code certified manufacturing facility with National Board certification. Capabilities include all types of non-destructive testing with a rigidly controlled Quality Control system.

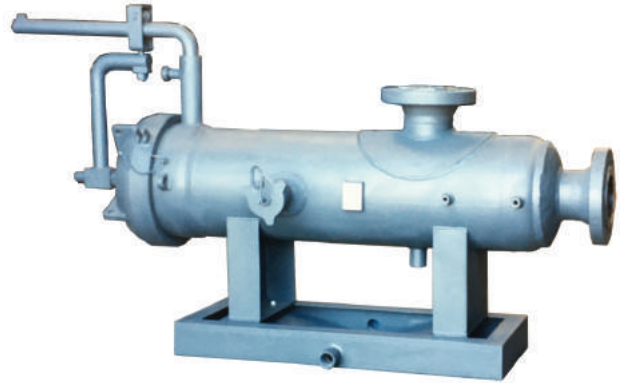


# Type 65 Dry Gas Filters

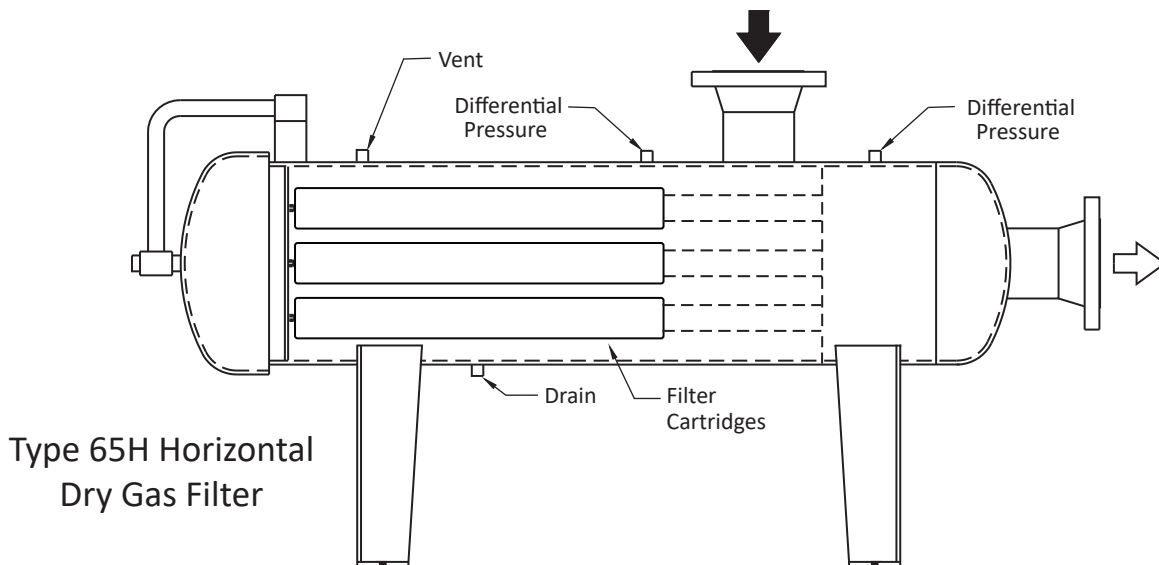
NOTE:  
Connections  
shown are  
typical and  
will vary with  
customer  
requirements.



Type 65V Vertical  
Dry Gas Filter



Filter Cartridges showing  
open and closed ends



Type 65H Horizontal  
Dry Gas Filter

Specifications are subject to change without notice. 4-10-2019 (supersedes 3-14-2017)

## WINSTON / ROYAL GUARD CORPORATION

P. O. Box 1145 • White Oak, Texas 75693 USA

Phone (800) 527-8465 • (903) 757-7341 • Fax (903) 759-6986

Winston-RoyalGuard.com • e-mail: sales@winston-royalguard.com

Copyright © 2019 Winston/Royal Guard Corporation. All rights reserved