



Natural Gas Filtration Type 65 Dry Gas Filters

Remove rust, scale, dust and
other dry particulates from natural gas

Pipeline • Refining • Petrochemical



Dry Gas Filtration for industry:

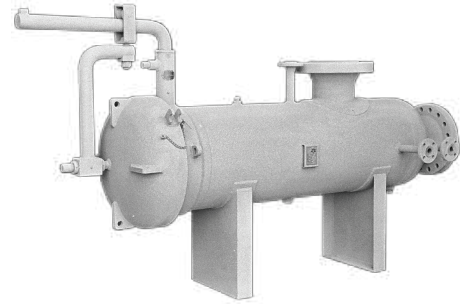
- Efficiencies to 99.9% of 0.3 microns
- Depth and pleated cartridge styles
- Protect valves, meters, regulators
- Horizontal and vertical vessel designs
- Applications include designs for steam

WINSTON / ROYAL GUARD CORPORATION



Natural Gas Filtration Type 65 Dry Gas Filters

Filtration for reliability in the removal of solid particulates from dry natural gas



The **Type 65 Dry Gas Filter** efficiently removes rust, pipeline scale and dust from a natural gas stream. Applications include protection for valves, meters, regulators, and other equipment in refineries, petrochemical plants, pipeline stations, and others. Available in both horizontal and vertical designs, the horizontal configuration has its benefits for better control of settled solids during change out the filter cartridges.

How it works: The gas entering the dry gas filter vessel flows into the filter cartridges from outside-to-inside. With this flow direction, the gas stream encounters the greatest filter media area for the maximum dry contaminant holding capacity and ensuring clean gas exits the filter vessel. The depth type filter cartridge is the most economical and does an excellent job of holding solids. The pleated filter cartridge is a good choice for expected high solids loading and has a very low clean pressure drop.

Filter Cartridges typically provided in the Type 65 Dry Gas Filters are:

- **WCL536 (1)** employs a molded fiberglass depth media rated for 98% of 1 micron particle capture. This cartridge offers effective filtration at an economic cost and remains one of our most widely furnished natural gas cartridges.
- **WCL536 (0.3)** with a rating of 0.3 micron at 99.9% efficiency has a fiberglass depth type media in combination with polypropylene coalescing media.
- **WMGL536** with a depth type graded density microglass media is available with ratings of 0.3 or 1 micron at 99.9% efficiency.
- **WP-L436b** Pleated Series with a rating of 1 micron up to 99.98% efficiency. The pleated design of the cartridge offers a longer service life between change-outs resulting lower maintenance costs.

Along with specific customer requirements some of the many options available are:

- Horizontal and vertical designs
- Skid mounted
- Custom nozzle orientation
- Lifting eyes
- Quick-opening closure
- Valve and control packages

ASME Code Certified: Winston/Royal Guard is an ASME Section VIII, Division 1 Code certified manufacturing facility with National Board certification. Capabilities include all types of non-destructive testing with a rigidly controlled Quality Control system.

WINSTON / ROYAL GUARD CORPORATION

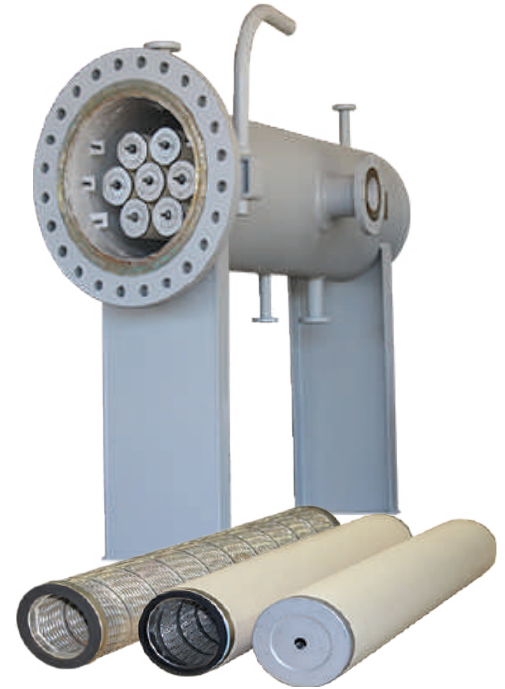
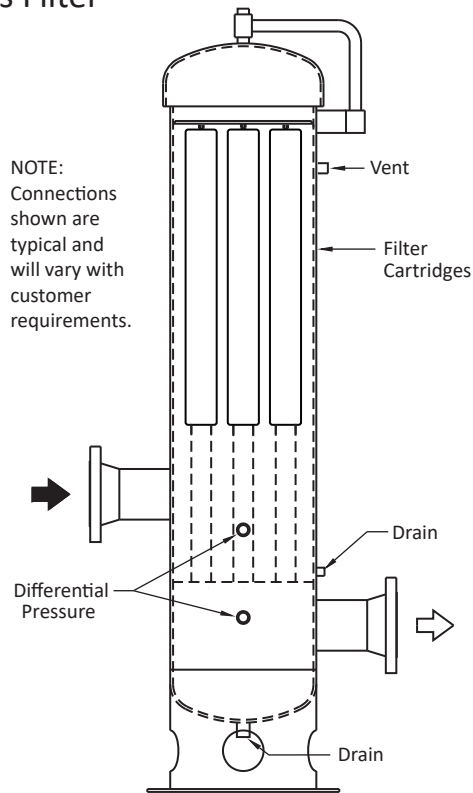


Natural Gas Filtration Type 65 Dry Gas Filters

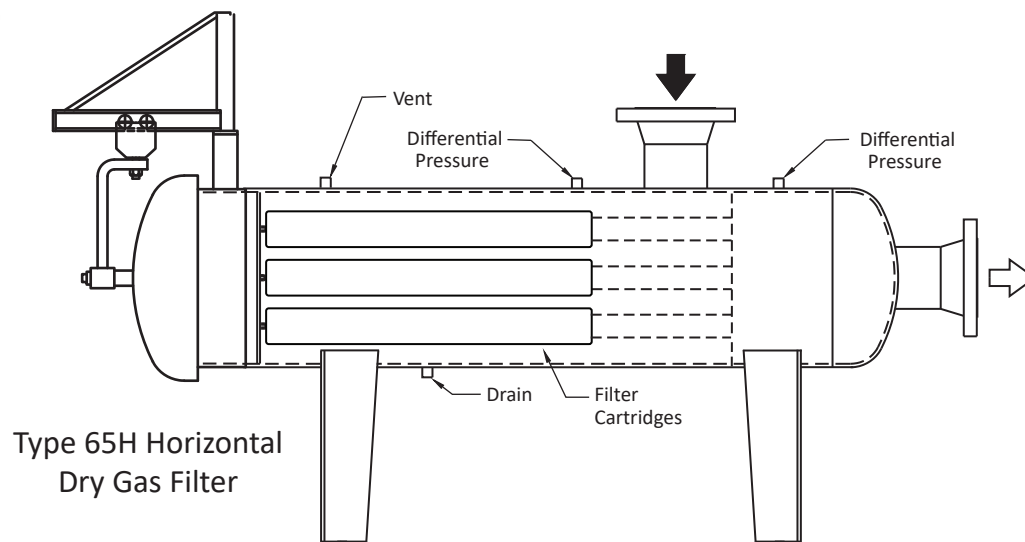
Type 65V Vertical
Dry Gas Filter



NOTE:
Connections
shown are
typical and
will vary with
customer
requirements.



Filter Cartridges showing
open and closed ends



Type 65H Horizontal
Dry Gas Filter

Specifications are subject to change without notice. 6-17-2021 (supersedes 4-13-2020)

WINSTON / ROYAL GUARD CORPORATION

P. O. Box 1145 • White Oak, Texas 75693 USA

Phone (800) 527-8465 • (903) 757-7341 • Fax (903) 759-6986

Winston-RoyalGuard.com • e-mail: sales@winston-royalguard.com

Copyright © 2021 Winston/Royal Guard Corporation. All rights reserved